

Dati generali

Paziente:

Data di nascita: 29/11/1964

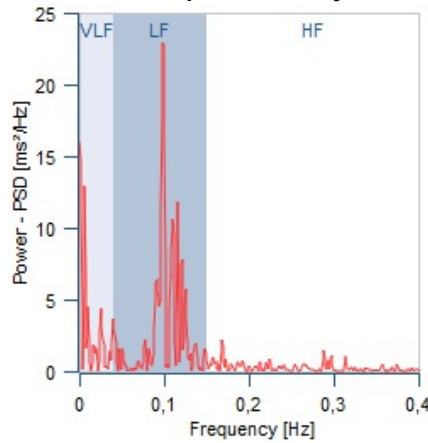
Età: 55

Sesso: M

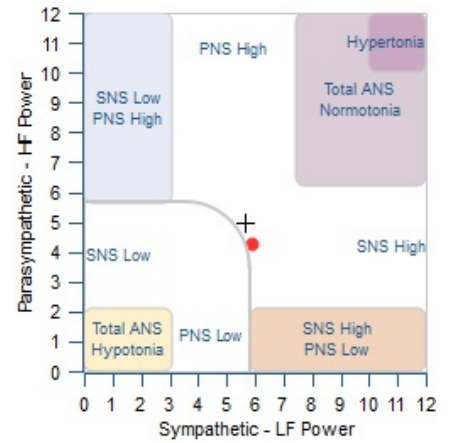
ANS test

		Norms
Mean HR:	84.7 bpm	[46.9 - 84.8]
SDNN:	25 ms	min 50 ms
RMSSD:	17 ms	min 30 ms
Total power:	6.36	min 8
VLF power:	4.98	max 6.7
LF power:	5.90	min 6.7
HF power:	4.26	min 6.5
LF/HF log:	1.6	
LF/HF ratio:	5.1	
SNS LF %:	83.7 %	
PNS HF %:	16.3 %	
THM freq:	0.10 Hz	norm 0.1 Hz
THM power:	22.91 ms ² /Hz	min 500 ms ² /Hz

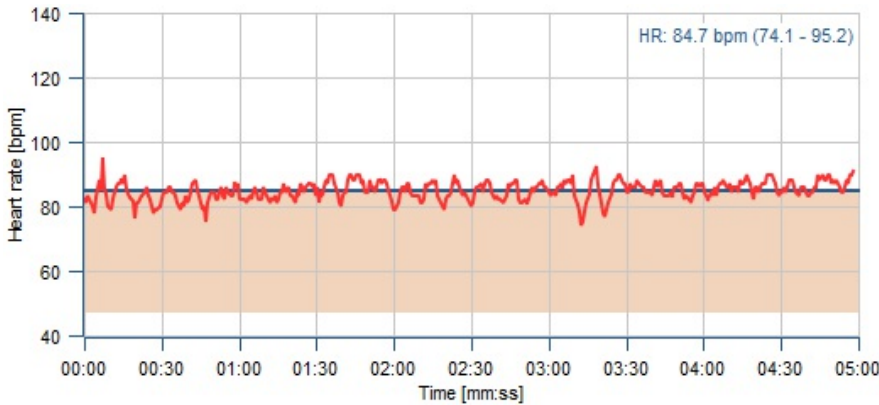
Power Spectral Density



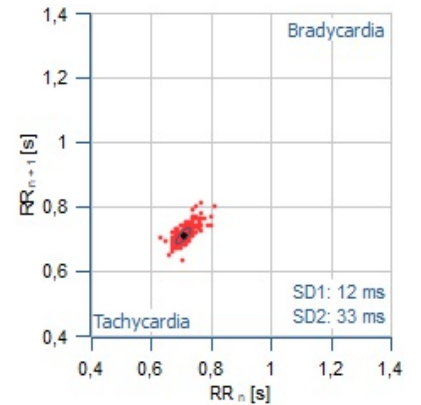
ANS Balance Power



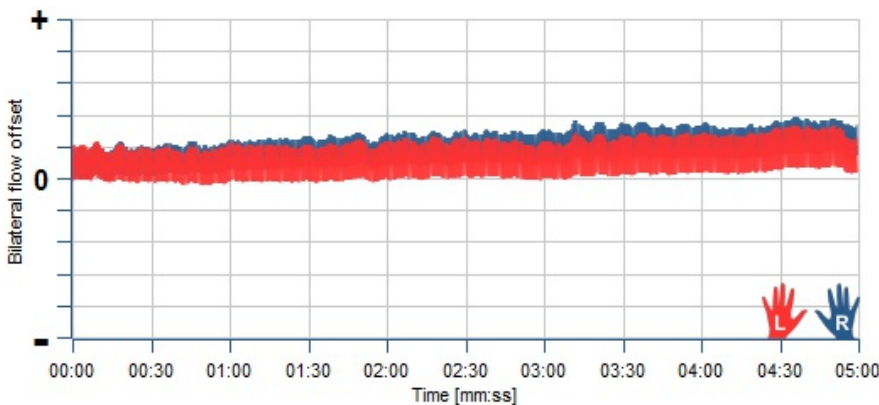
Heart rate



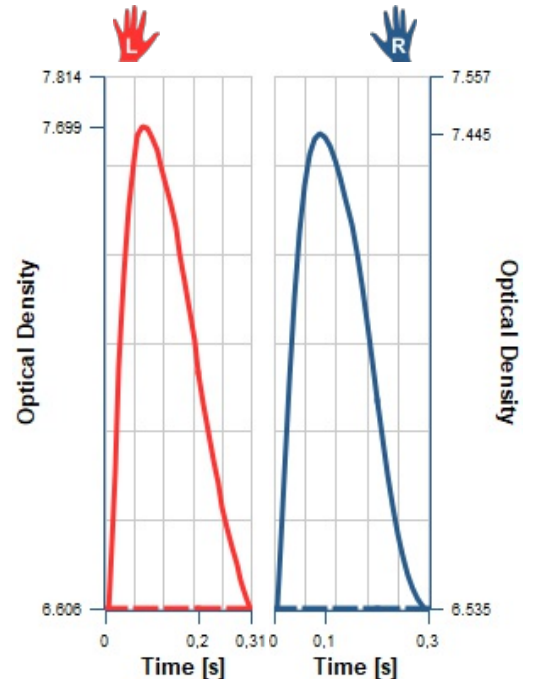
Scatter - Heart rate



Bilateral flow



Mean Pulse Wave



Bilat. Flow Gain (BFG):	1821.3	1498.9	min 300
Bilat. Flow Gain (BFG%):	54.9	45.1	norm [45-55]

Average spO ₂	96.2
spO ₂ ≥ 95%	Green
spO ₂ [91% - 95%]	Yellow
spO ₂ < 91%	Red

Report analitico - non integrante il dispositivo PPG Stress Flow -

metabolic Respiratory Exchange Ratio mRER: 1.2 **normal range:** [0.7-1]

Breath rate rest: 5.9 breaths/min **normal range:** [6-18]

Capillary permeability: High

Analisi dinamica del Sistema Nervoso Autonomo

Bassa modulazione del tono vagale.
Ridotta funzionalità della *Cholinergic Antiinflammatory Pathway (Inflammatory Reflex)*.
Predisposizione a scarsa adattabilità verso interazioni negative.

Variabilità della frequenza cardiaca bassa.